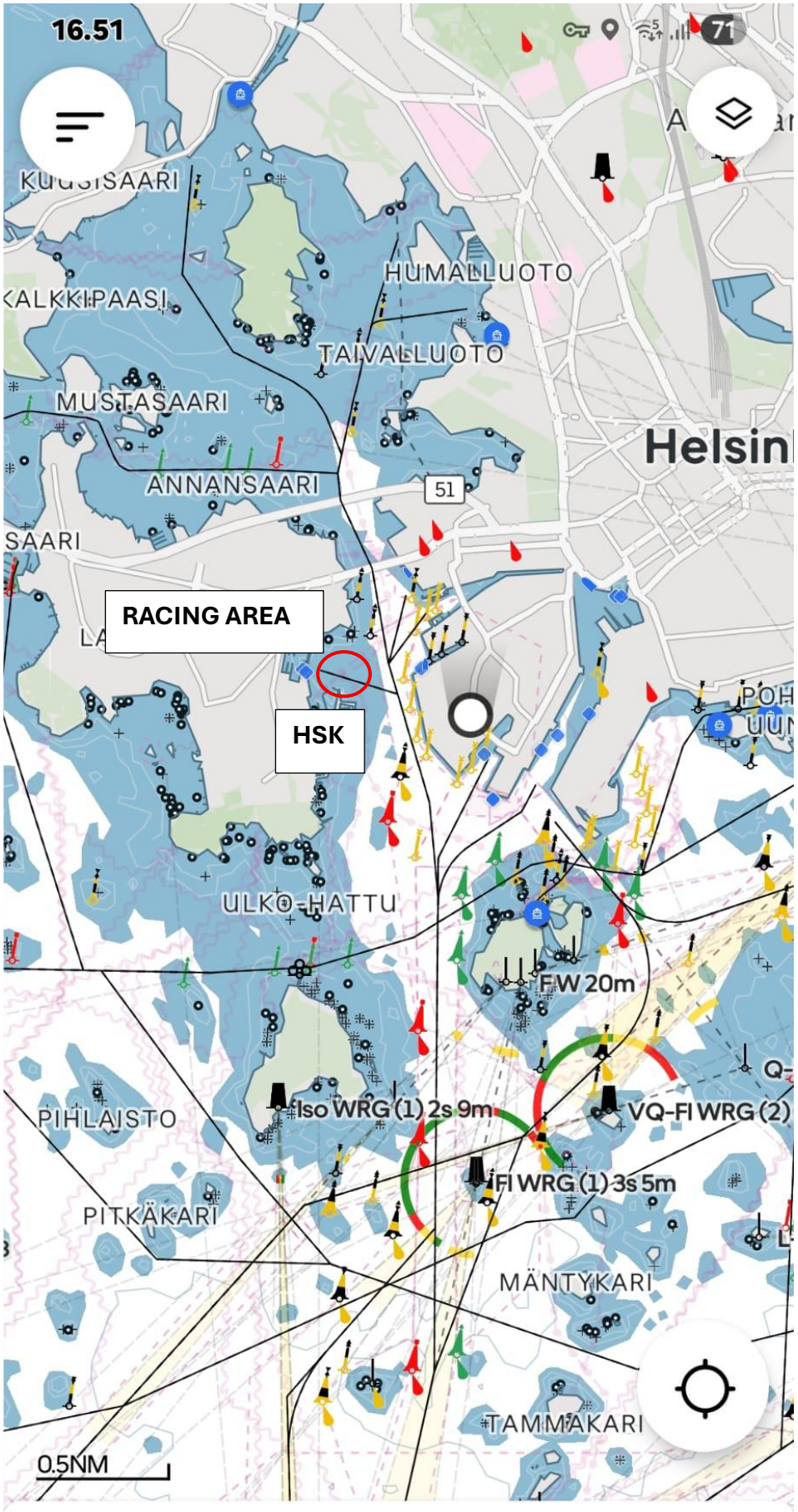


Attachment 1

1. 4 x MAPS
2. WIND STATISTICS 2 + TEMP STATICS
3. 4 PHOTOS DEC25
4. 6 PHOTOS DURING IOM FINNISH NATIONALS 2025
5. RACING AREAS IN DIFFERENT WINDS

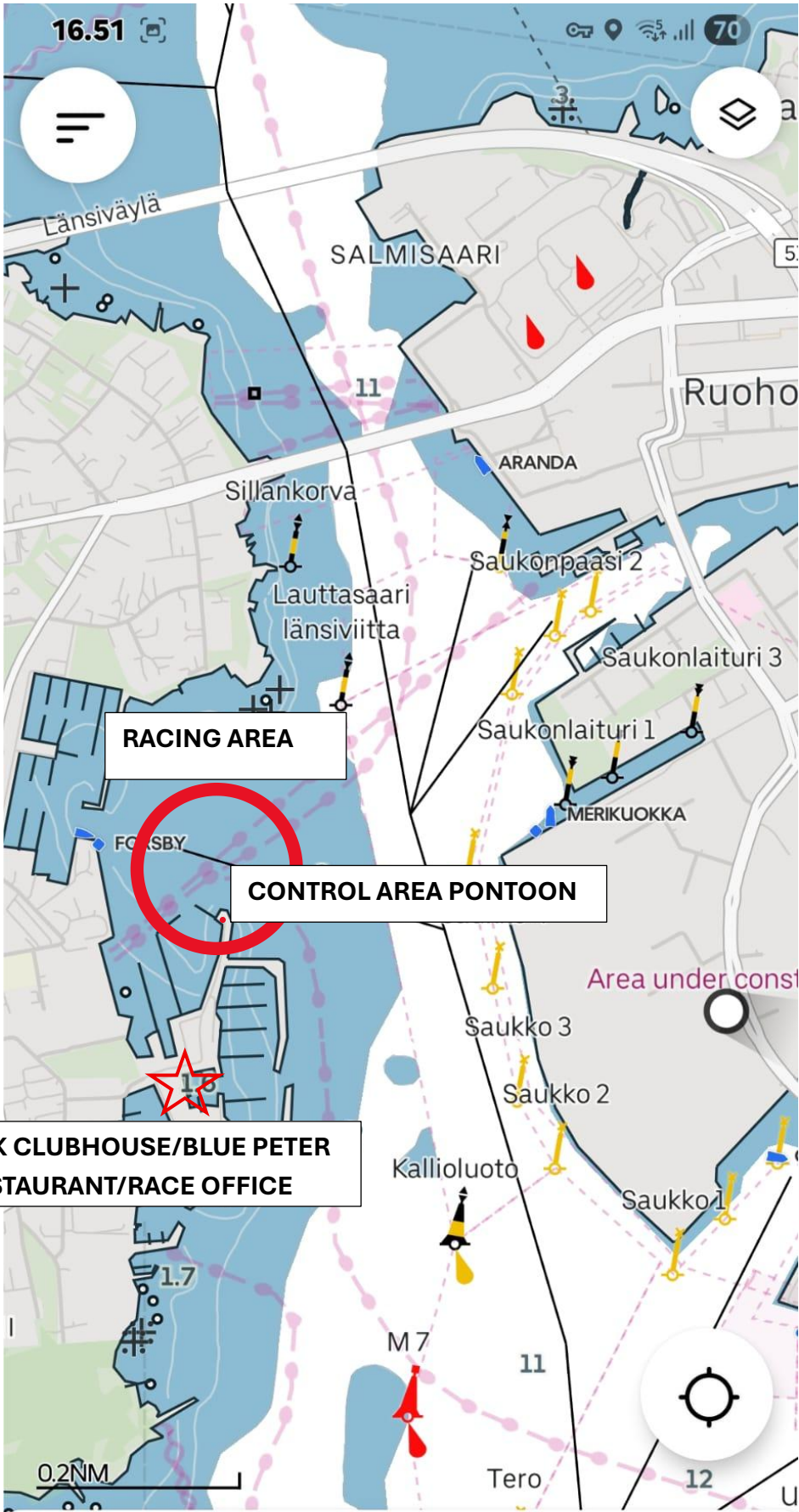


Reit...

Haku

Sää

Instrumentit



RACING AREA

CONTROL AREA PONTOON

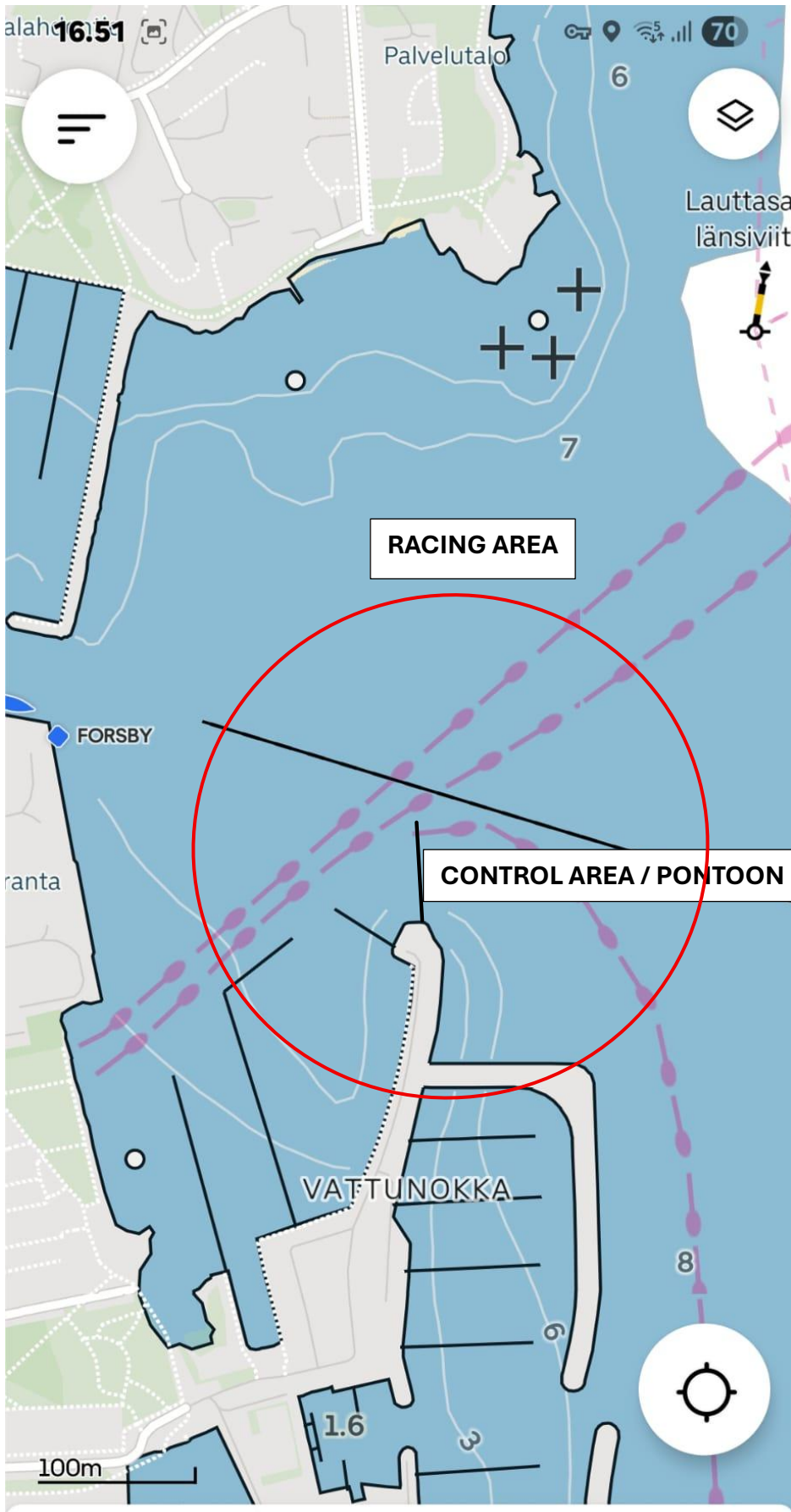
HSK CLUBHOUSE/BLUE PETER RESTAURANT/RACE OFFICE

Reit...

Haku

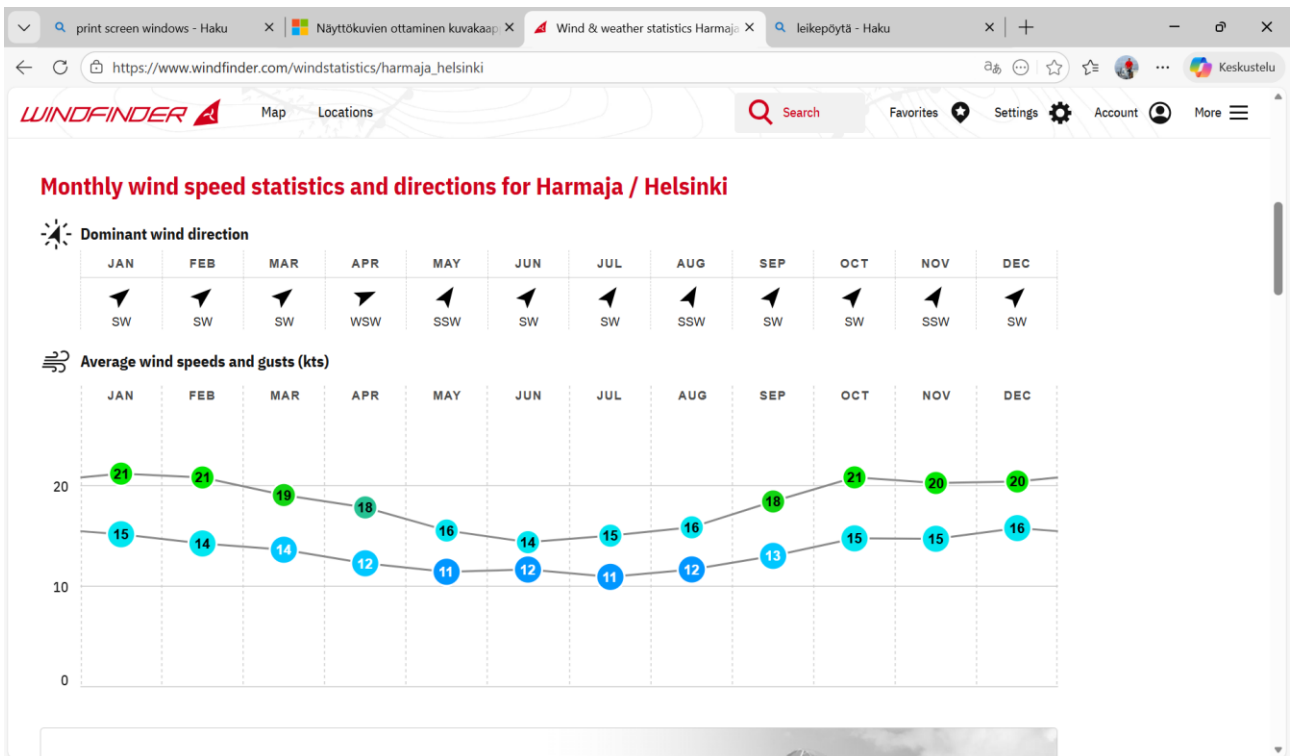
Sää

Instrumentit



- Same Racing area for all wind directions
- Even in high SW winds IOM racing possible
- Distance to Control area pontoon from the HSK Club house is approx. 300meters
- Closest buildings approx. 200meters from SW limit of Racing area
- No tidal effect
- Some waves from passing boats possible
- YouTube-video from FIN Nationals 2025 (E winds): [Facebook](#)
- Closest Clubs will be informed about the IOM event.

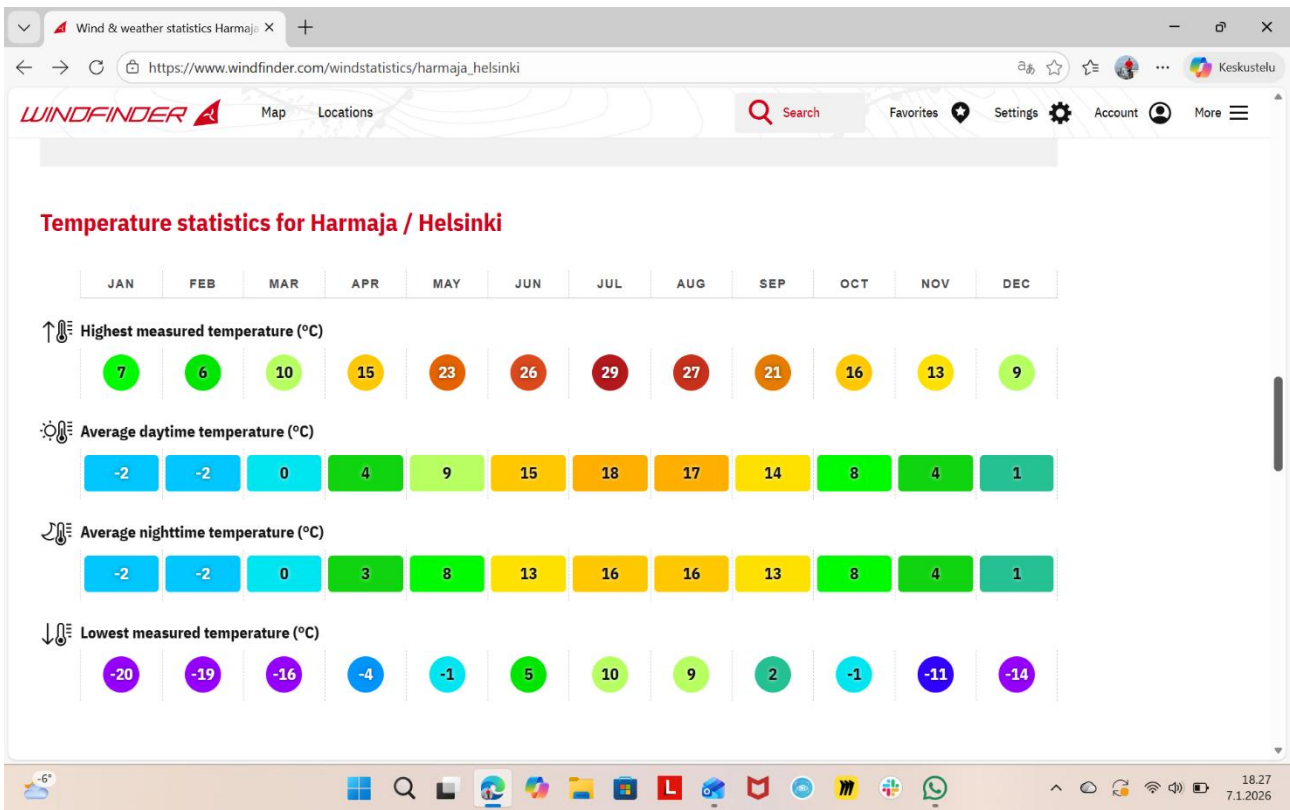
MONTHLY WINDS – DIRECTION/STRENGTH (@ HARMAJA LIGHTHOUSE)



MONTHLY WIND DIRECTION + STRENGTH DISTRIBUTION (@HARMAJA LIGHTHOUSE)



TEMPERATURE STATISTICS (@ HARMAJA LIGHTHOUSE)



PHOTOS FROM THE RACING AREA DECEMBER 2025

Sunny winter month day round noon, Wind N/NE 10-15 kts air -2 degrees Celsius, waves 10-20cm



Racing area from SW to N/NE – Control area pontoon NW end on the middle right.



Racing area from S to NW/N/NE – Control area pontoon on the middle left.



Racing Area from SE to NW/W – Control Area pontoon on the right.



Racing Area from NW to SE – Control Area pontoon to the left (not in image).



From Control area pontoon to racing area to N/NE (IOM Finnish Nationals 2025)



Racing area from E to W – Control area pontoon and closest buildings to SW/W direction ca 200meters from the racing area SW/W limit (IOM Finnish Nationals 2025)



From control area pontoon to racing area to NW/N direction (IOM Finnish Nationals 2025)



Racing area from NE direction to SW direction (IOM Finnish Nationals 2025)

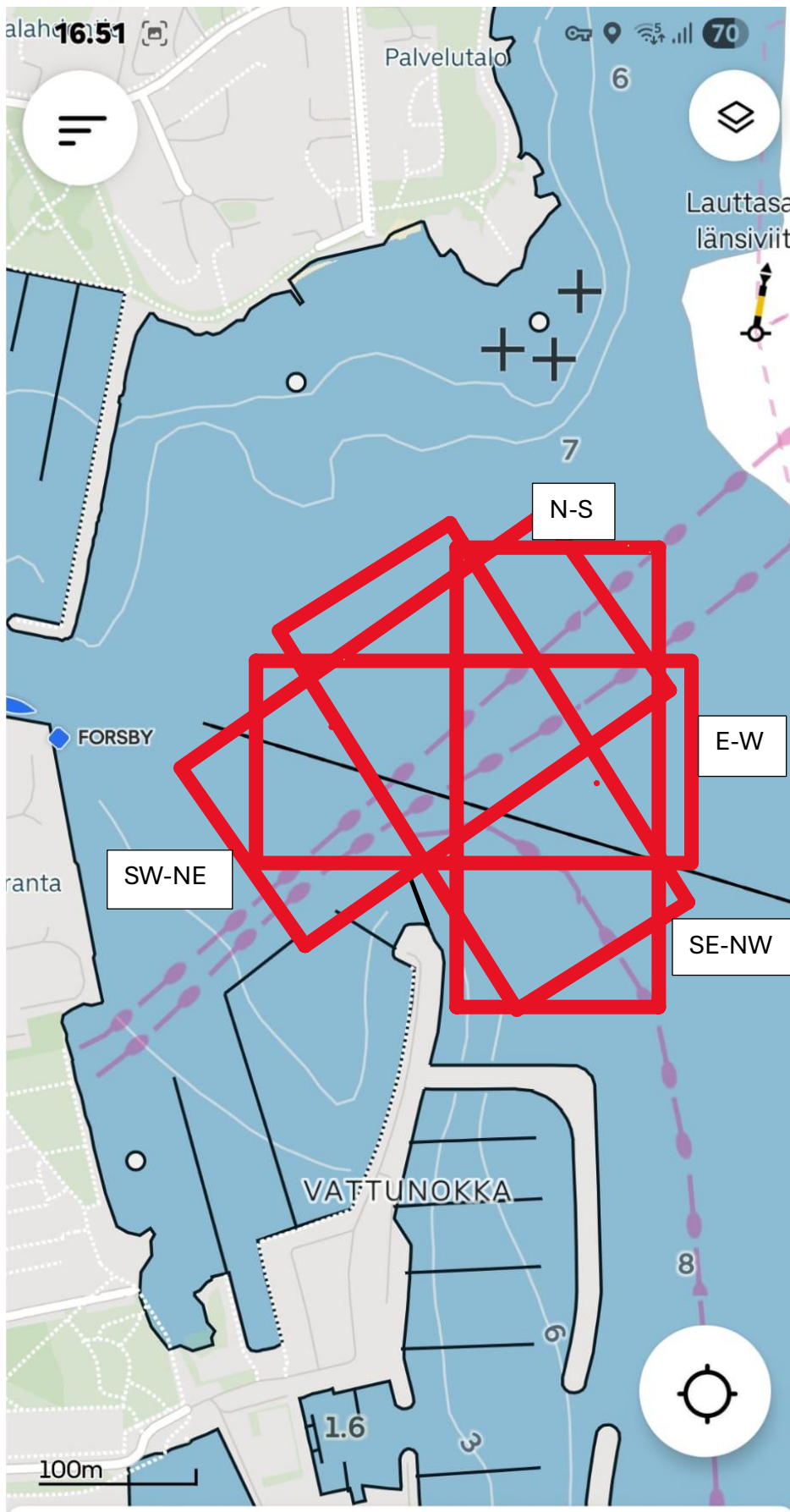


Control area pontoon to N direction (IOM Finnish Nationals 2025)



50meters to S direction from the control are pontoon at the wave braker

RACE COURSE DIRECTIONS S/SW/W/NE/N/NE/E/SE WINDS



- Race courses can be laid to all wind directions and control area will be the same
- Course length 10-12mins with 2 laps
- No weed
- Some wakes from passing boats
- Only IOM-sailors and officials in active heat permitted to the control area
- Stand by area for coming heat outside the Control area pontoons
- Ongoing racing can be followed from passive pontoons or wave braker near by



